

Hypercholesterolemic arthritis in a young female

Prasanta Padhan¹ , Prita Pradhan² , Ipsita Mohanty¹ 

A 30-year-old female presented with arthritis of the small joints with swellings on the proximal inter phalangeal joints since 18 months (Figure 1). She with normal Erythrocyte Sedimentation Rate (ESR) and C-reactive protein levels; her rheumatoid factor, anti-cyclic citrullinated peptide, and antinuclear antibody (ANA) tests were negative. Ocular examination revealed a grayish-white ring at the periphery of cornea, which indicated corneal arcus (Figure 2). Lipid examination showed the following: total cholesterol, 325 mg/dL (normal value <200 mg/dL) and low density lipoprotein cholesterol, 271 mg/dL (normal value <130 mg/dL), with normal serum triglyceride and high density lipoprotein levels. The biopsy sample obtained from skin nodules revealed numerous foam cells in the dermis, and this was consistent with the findings of xanthomas (Figure 3). Plain radiographs of the hands did not show erosions (Figure 4). Her family history was negative for similar illnesses. She received atorvastatin 20 mg/day and paracetamol; 2 months later, her lipid levels returned to normal levels with significant improvement in arthritis, but corneal arcus and xanthomas persisted. She was diagnosed with arthropathy related to dyslipidemia. Other rheumatologic features include recurrent achilles pain or tendinitis, acute mono/oligoarthritis, and migratory (rheumatic fever-like) polyarthritis (1). The symptoms might resemble those of rheumatoid

levels with significant improvement in arthritis, but corneal arcus and xanthomas persisted. She was diagnosed with arthropathy related to dyslipidemia. Other rheumatologic features include recurrent achilles pain or tendinitis, acute mono/oligoarthritis, and migratory (rheumatic fever-like) polyarthritis (1). The symptoms might resemble those of rheumatoid



Figure 1. Swelling over the proximal inter phalangeal (PIP) joints

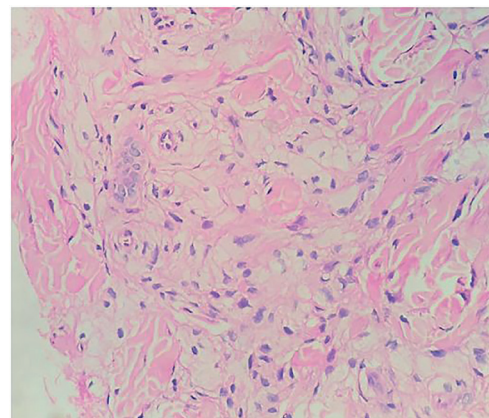


Figure 3. Photomicrograph of lower dermis with numerous foam cells (lipid-laden macrophages) within the dermal collagen (H&E, 400x)



Figure 2. Gray white ring at periphery of cornea: corneal arcus

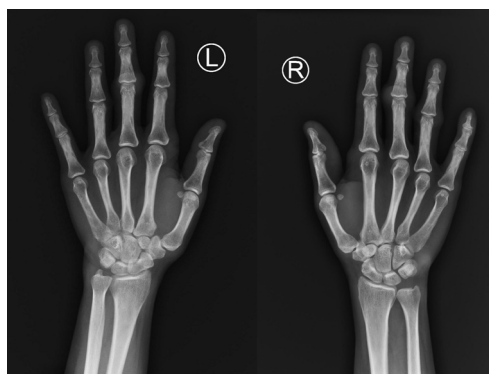


Figure 4. Plain radiographs of hands with soft tissue swelling on PIP joints

ORCID IDs of the Authors:
P.P. 0000-0002-2545-9032;
P.Pradhan. 0000-0003-2092-3235;
I.M. 0000-0001-9194-5795.

Cite this article as: Padhan P, Pradhan P, Mohanty I. Hypercholesterolemic arthritis in a young female. Eur J Rheumatol 2019; 10.5152/eurjrheum.2019.19033.

¹ Department of Rheumatology, Kalinga Institute of Medical Sciences, KIIT University School of Medicine, Odisha, India

² Department of Pathology, Kalinga Institute of Medical Sciences, KIIT University School of Medicine, Odisha, India

Address for Correspondence:
Prasanta Padhan; Department of Rheumatology, Kalinga Institute of Medical Sciences, KIIT University School of Medicine, Odisha, India

E-mail: prasanta.padhan@gmail.com

Submitted: 12 February 2019

Accepted: 20 March 2019

Available Online Date: 20 May 2019

Copyright©Author(s) - Available online at www.eurjrheumatol.org.

Content of this journal is licensed under a Creative Commons Attribution-NonCommercial 4.0 International License.



arthritis with rheumatoid nodules, indicative of tophaceous gout. Unlike xanthomas, rheumatoid nodules are often found over the extensor surfaces, but they are almost invariably associated with circulating RF and a characteristic histological appearance (2). Hyperlipidemia should be considered in a patient presenting with articular symptoms with normal ESR and CRP.

Informed Consent: Written informed consent was obtained from patient who participated in this study.

Peer-review: Externally peer-reviewed.

Author Contributions: Concept - P.P., I.M.; Design - P.P., P.P.; Supervision - P.P., P.P.; Resources - P.P., I.M.; Materials - P.P., I.M.; Data Collection and/or Processing - P.P., IM; Analysis and/or Interpretation - P.P., IM Literature Search - P.P., P.P.; Writing Manuscript - P.P., I.M.; Critical Review - P.P., I.M.; Other - P.P., I.M.

Conflict of Interest: The authors have no conflict of interest to declare.

Financial Disclosure: The authors declared that this study has received no financial support.

References

1. Klemm P, Halland AM, Majoos FL, Steyn K. Musculoskeletal manifestations in hyperlipidaemia: a controlled study. *Annals of the rheumatic diseases*. *Ann Rheum Dis* 1993; 52: 44-8. [\[CrossRef\]](#)
2. Chalès G, Coiffier G, Guggenbuhl P. Rare thesaurismosis and xanthomatosis. *Best Pract Res Clin Rheumatol* 2011; 25: 683-701. [\[CrossRef\]](#)