

Nuclear medicine imaging in idiopathic inflammatory myopathies

Thomas Nadin¹ , Mohammed Akil¹ , Manu Shastry² , Michael Hughes¹ 

A 76-year-old female presented with a three-month history of progressive proximal muscle weakness and systemic disturbances, including fatigue and malaise. There was a contemporaneous onset of a widespread rash (including the trunk and limbs) in keeping with dermatomyositis. Before the onset of her illness, she was fully mobile and independent. Physical examination revealed marked reduction in power in the proximal musculature and neck. Investigations revealed a raised creatine kinase (4018 IU/L). Magnetic resonance imaging of the femurs demonstrated florid muscle edema. Computerised tomography - positron emission tomography (CT-PET) (Figure 1) (Top and bottom left) imaging demonstrated increased uptake of fluorodeoxyglucose tracer in the skeletal muscle of the proximal upper limbs and neck. Electromyography findings were consistent with diagnosis of myositis, including profuse fibrillation and positive sharp waves in the deltoid muscle group. Immunology was negative, including myositis-specific antibodies. A diagnosis of dermatomyositis was made based on the clinical findings and investigations. CT-PET (Figure 1) (Bottom right) revealed an incidental facial squamous cell carcinoma (arrow) which was subsequently completely excised at an early stage, avoiding lymph node/other spread. Increased colonic uptake from diverticular disease was also noted and subsequent colonoscopy was negative for malignancy. Our case highlights the potential clinical utility of nuclear medicine imaging to screen for underlying malignancy and to assess muscle disease activity (Figure 1).

ORCID ID of the Authors:

T.N. 0000-0003-1326-2475;
M.A. 0000-0002-6813-4289;
M.S. 0000-0003-3856-9959;
M.H. 0000-0003-3361-4909.

Cite this article as: Nadin T, Akil M, Shastry M, Hughes M. Nuclear medicine imaging in idiopathic inflammatory myopathies. *Eur J Rheumatol* 2019; 10.5152/eurjrheum.2018.18199.

¹ Department of Rheumatology, Royal Hallamshire Hospital, Sheffield Teaching Hospitals NHS Foundation Trust, Sheffield, UK

² Department of Radiology, Northern General Hospital, Sheffield Teaching Hospitals NHS Foundation Trust, Sheffield, UK

Address for Correspondence:

Michael Hughes; Department of Rheumatology, Royal Hallamshire Hospital, Sheffield Teaching Hospitals NHS Foundation Trust, Sheffield, UK

E-mail: Michael.hughes-6@postgrad.manchester.ac.uk

Submitted: 28 December 2018

Accepted: 10 February 2019

Available Online Date: 10 March 2019

Copyright © Author(s) - Available online at www.eurjrheumatol.org.

Content of this journal is licensed under a Creative Commons Attribution-NonCommercial 4.0 International License.

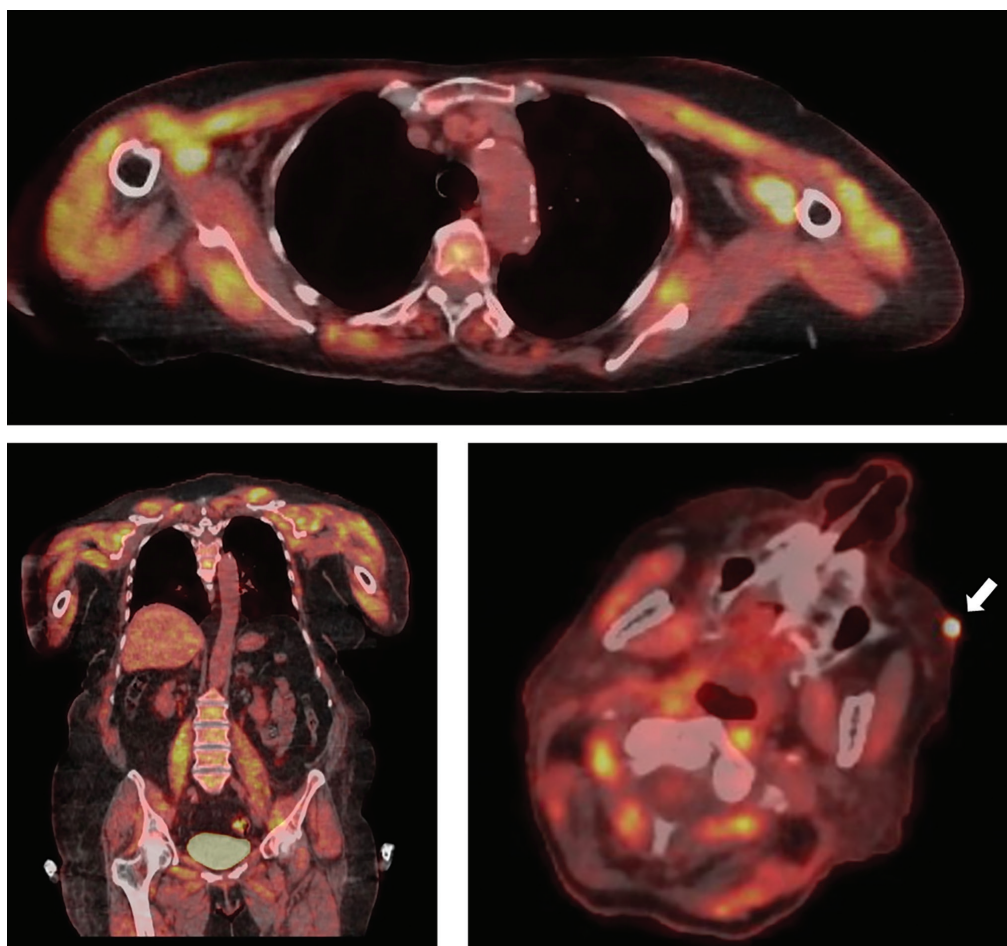


Figure 1. Nuclear medicine imaging in idiopathic inflammatory myopathies

Peer-review: Externally peer-reviewed.

Author Contributions: Concept - M.H., T.N.; Design - M.H., T.N.; Supervision - M.H.; Resources - T.N., M.S., M.H.; Materials - T.N., M.S.; Data Collection

and/or Processing - T.N., M.A., M.S., M.H.; Analysis and/or Interpretation - T.N., M.A., M.S., M.H.; Literature Search - T.N., M.H.; Writing Manuscript - T.N., M.A., M.S., M.H.; Critical Review - T.N., M.S., M.A., M.H.

Conflict of Interest: The authors have no conflict of interest to declare.

Financial Disclosure: The authors declared that this study has received no financial support.