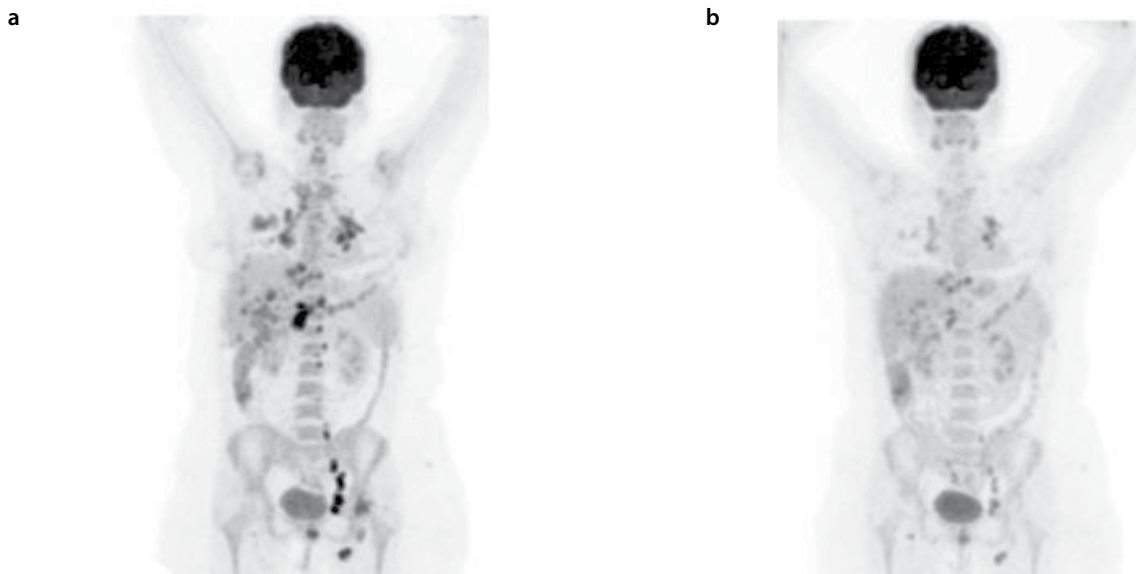


## Dramatic change in disease activity visualized by PET in a patient with sarcoidosis

Cihan Heybeli<sup>1</sup>, İsmail Sarı<sup>2</sup>, Recep Bekiş<sup>3</sup>, Servet Akar<sup>4</sup>



- 1 Department of Internal Medicine, Dokuz Eylül University Faculty of Medicine, İzmir, Turkey
- 2 Department of Rheumatology, Dokuz Eylül University Faculty of Medicine, İzmir, Turkey
- 3 Department of Nuclear Medicine, Dokuz Eylül University Faculty of Medicine, İzmir, Turkey
- 4 Department of Internal Medicine, Katip Çelebi University Atatürk Education and Research Hospital, İzmir, Turkey

*Address for Correspondence:*

Cihan Heybeli, Department of Internal Medicine, Dokuz Eylül University Faculty of Medicine, İzmir, Turkey

E-mail: heybelic@hotmail.com

Submitted: 26.03.2014

Accepted: 30.04.2014

Copyright 2014 © Medical Research and Education Association

A 39-year-old female presented with malaise, weight loss, and generalized joint pain. Symptoms started 6 months prior to presentation and progressed over time. Laboratory tests revealed increased C-reactive protein (43.4 mg/L) and lactate dehydrogenase (330 U/L). Chest imaging showed mediastinal lymphadenopathy and nodular infiltration in the parenchyma of both lungs. Due to the subtle loss of weight and results of other imaging studies, positron emission tomography (PET) with fluorodeoxyglucose (FDG) was performed. Pathological FDG uptakes were observed in the cervical, hilar, and intraabdominal lymph nodes, lung parenchyma, liver, humerus, and ilium (Figure 1A). The patient was diagnosed as sarcoidosis according to the histopathological examination of a mediastinal lymph node. Corticosteroid and azathioprine were prescribed. Four months after treatment, a control PET scan was performed (Figure 1B). There was dramatic improvement in all anatomical sites compared with the first scan, correlating with symptom relief. In conclusion, PET scan may be a useful tool for monitoring disease activity in widespread sarcoidosis.

**Informed Consent:** Written informed consent was obtained from patient who participated in this study.

**Peer-review:** Externally peer-reviewed.

**Author contributions:** Concept - S.A.; Design - S.A., I.S.; Supervision - S.A., C.H.; Resource - R.B.; Materials - R.B., C.H.; Data Collection&/or Processing - C.H., R.B.; Analysis&/or Interpretation - S.A., I.S.; Literature Search - S.A., I.S., C.H.; Writing - S.A., I.S., C.H.; Critical Reviews - S.A.

**Conflict of Interest:** No conflict of interest was declared by the authors.

**Financial Disclosure:** The authors declared that this study has received no financial support.